

## SERVICES OFFERED

- Identification of macrobotanical plant material from flotation samples and excavation
- Quantification of data
  - e.g., ubiquity, density, diversity, correspondence analysis
- Presentation of data
  - Tables and graphs
  - Written report
  - Photographs
- Interpretation of data

## FEES

- \$200 per floated sample, includes written report
- OR
- \$40 per hour
  - Flotation \$40 per hour
  - Fees adjustable depending on project and sample type



Karla Hansen-Speer  
Ph.D., RPA  
Paleoethnobotanical  
Consultant

3200 E. Eaton Dr.

Terre Haute, IN 47802

Phone (812) 299-0473

[karla@paleoethnobotany.com](mailto:karla@paleoethnobotany.com)

[www.paleoethnobotany.com](http://www.paleoethnobotany.com)

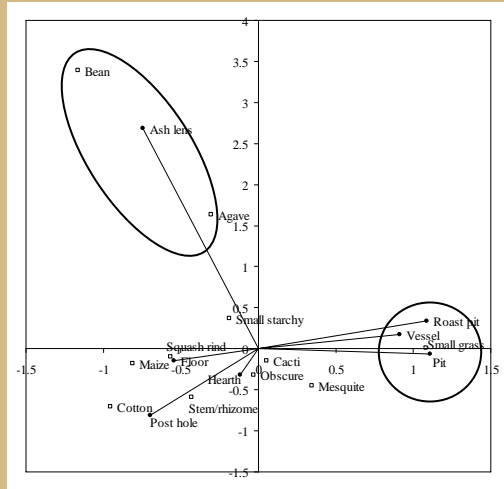
# Paleoethno -botanical Consulting

Karla Hansen-Speer, Ph.D., RPA



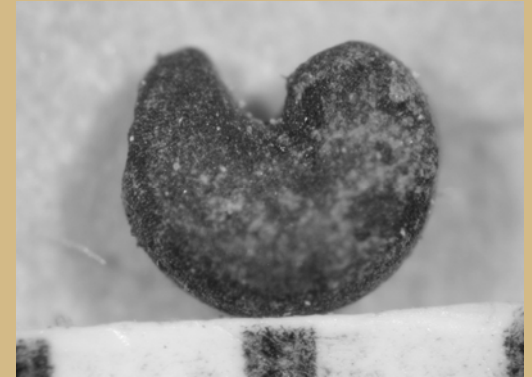
EXPERTISE AND DEPENDABILITY

Correspondence Analysis  
(Hansen-Speer 2006)



GEOGRAPHICAL AREAS  
OF EXPERIENCE

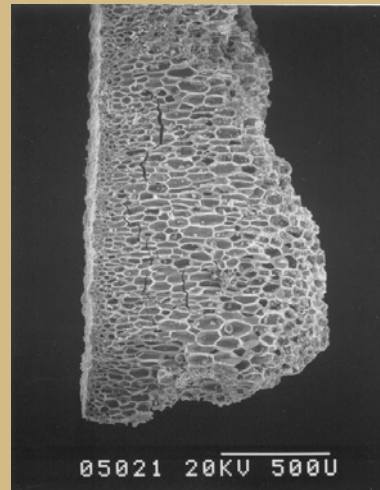
- American Southwest
  - Arizona
  - New Mexico
- Eastern Woodlands
  - Illinois
  - Indiana
  - Mississippi
  - Tennessee



Globemallow seed (*Sphaeralcea* sp.)

QUALIFICATIONS

- Ph.D. in Anthropology from Washington University in St. Louis, 2006
- Ten years of archaeological and archaeobotanical experience
- RPA (Register of Professional Archaeologists)
- CV and references upon request



Squash rind (*Cucurbita* sp.)



Karla Hansen-Speer  
Ph.D., RPA  
Paleoethnobotanical  
Consultant  
3200 E. Eaton Dr.  
Terre Haute, IN 47802  
Phone (812) 299-0473  
[karla@paleoethnobotany.com](mailto:karla@paleoethnobotany.com)  
[www.paleoethnobotany.com](http://www.paleoethnobotany.com)